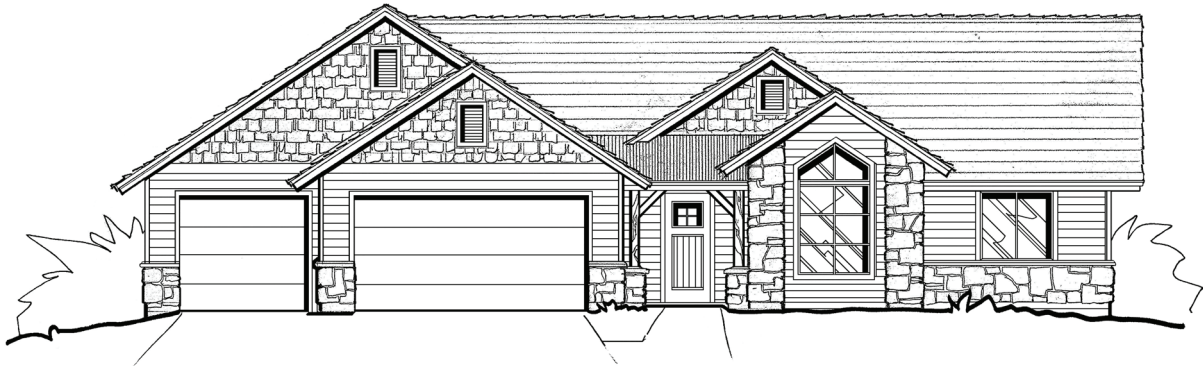


# TO BE CONSTRUCTED

---

# NEW HOME!



## The Teton

Custom built 3BR/2BA home. Large 3 car garage, dual pane windows and a generous allowance package for flooring, lighting, cabinets, countertops and appliances.

**NEW FOR LESS THAN USED !!!**



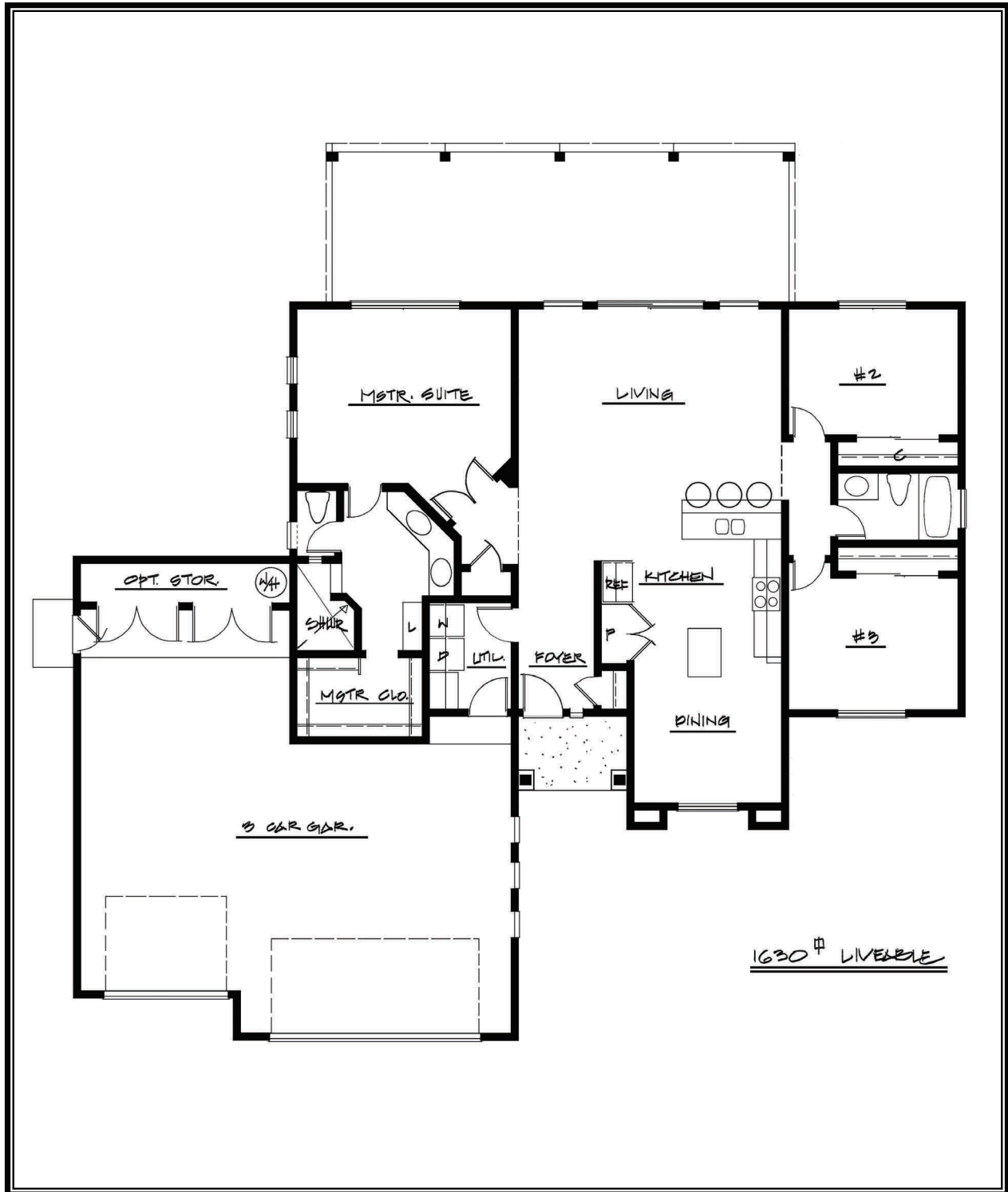
### **RORY HUFF**

ERA Young Realty & Investment  
424 S Beeline Hwy, Payson, AZ 85541  
E-mail: [roryhuff57@yahoo.com](mailto:roryhuff57@yahoo.com)  
Office: (928) 472-3615 — Cell: (928) 595-0136

*Each ERA® office is independently owned and operated.  
Information is deemed reliable but not guaranteed.*



# The Teton



*\*Floor Plan depicted is a general representation – Actual floor plan may differ.*

## **C. & P. Custom Homes**

### **“The Teton”**

1630 sq.ft. liveable, 3 bedrooms, 2 bathrooms and 3-car garage

#### Included Standard Features

- All Permits and site prep needed for construction. House location set by builder as per site plan.
- Masonry foundation with concrete floor, concrete driveway and sidewalk.
- 2x6 exterior walls with R-19 insulation.
- R-30 insulation in ceilings.
- 5-inch horizontal lap Masonite Exterior Siding. (Buyers choice of Color).
- Concrete Patio or Wood Deck depending on lot elevation.
- 36 inch Stone Veneer on front elevations of home.
- Vinyl Dual pane windows.
- 30 year dimensional shingles.
- Delta faucets & shower fixtures.
- 40 gallon water heater.
- Lighting fixture and ceiling fan allowance.
- Cabinet allowance for Kitchen and Bathrooms.
- Countertop allowance for Kitchen and Bathrooms.
- Flooring allowances.
- Appliance allowance.
- Garage to be taped, textured, and painted.
- We commit to complete your home within 120 days from the time we receive Town of Payson approval, subject to material availability and weather conditions.