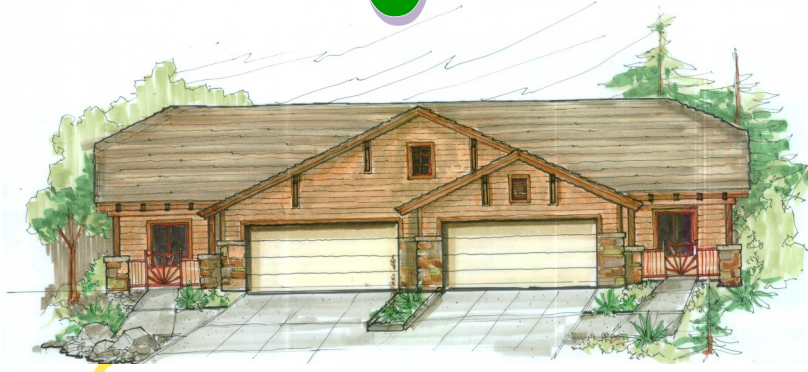


# Rim Ridge Estates




# Townhomes!



## RORY HUFF

ERA Young Realty & Investment  
424 S Beeline Hwy, Payson, AZ 85541  
E-mail: [roryhuff57@yahoo.com](mailto:roryhuff57@yahoo.com)  
Office: (928) 472-3615 — Cell: (928) 595-0136



**CHRIS PERKES**  
  
**CUSTOM HOMES**



**Welcome to one of Payson's new upscale Townhome developments.**

**Three floor plans to choose from:**

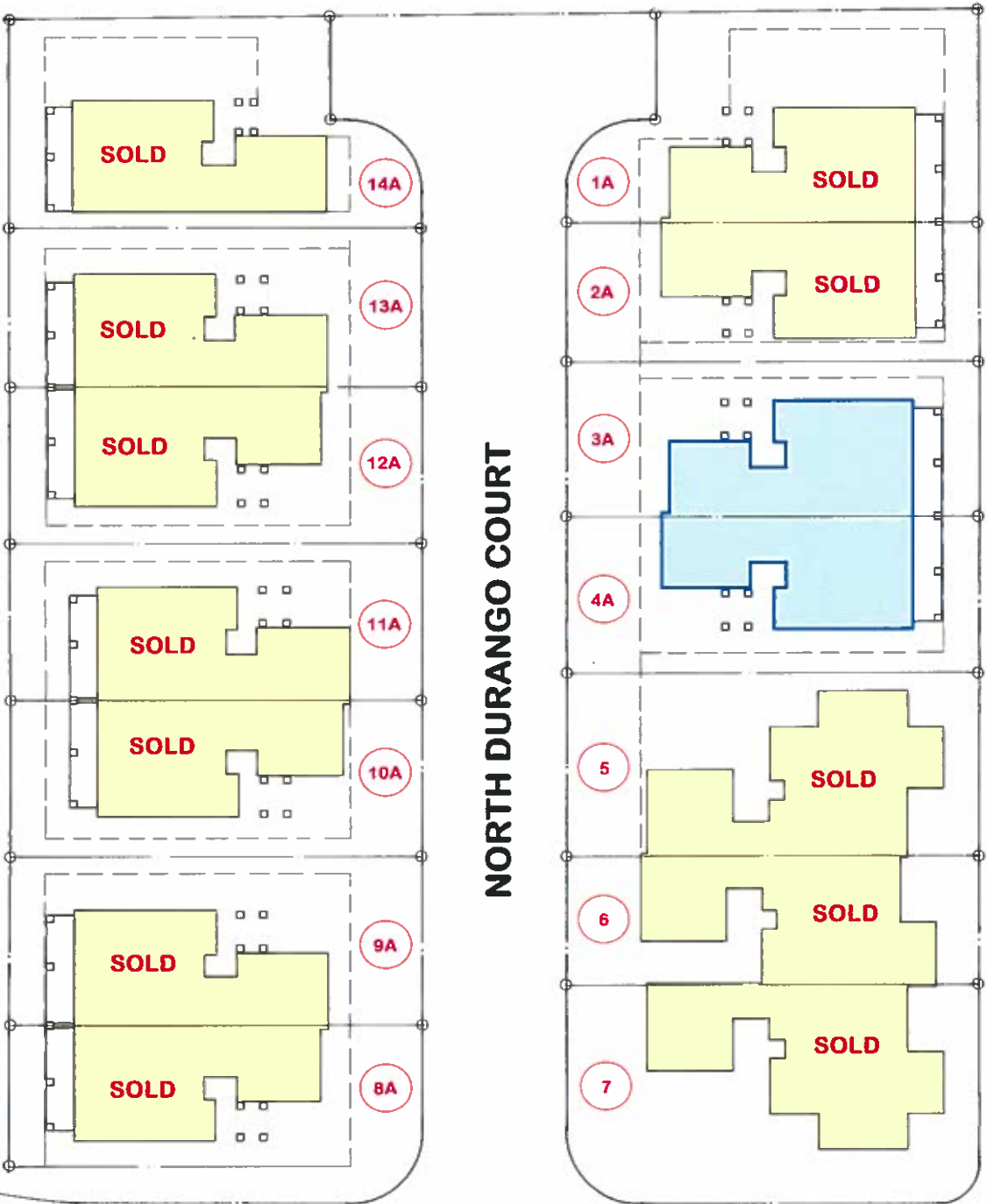
- 1) ASPEN: Two bedroom, two bathroom, single level**
- 2) PINON: Two bedroom, two bathroom & office, single level**
- 3) PONDEROSA: Three bedroom, three bathroom, two story,  
Guest bedroom & bathroom upstairs.**

**The builder is offering generous allowances for flooring, cabinets, appliances, lighting, and your choice of level one granite counter-tops for the kitchen and marble for the bathroom vanities.**

**This development is designed for quality and uniformity to protect your investment.**

**When travel, individual interests and other life experience becomes a priority, buy here and enjoy maintenance free living.**

**The development is located across from Gila Community College and within walking distance to grocery stores.**



**NORTH DURANGO COURT**

**NORTH MUD SPRINGS ROAD**

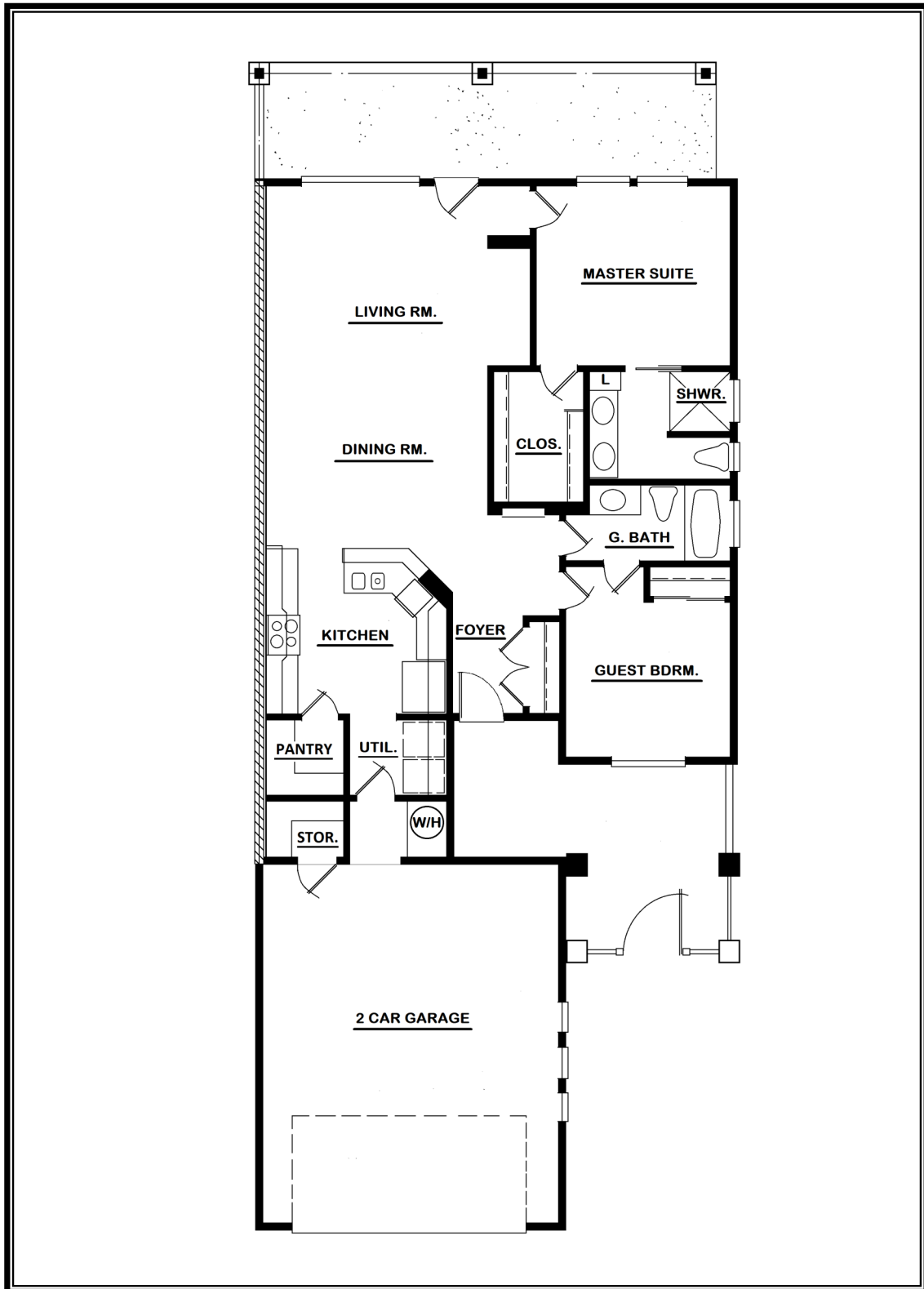
**EAST RIM RIDGE DRIVE**

## QUALITY FEATURES

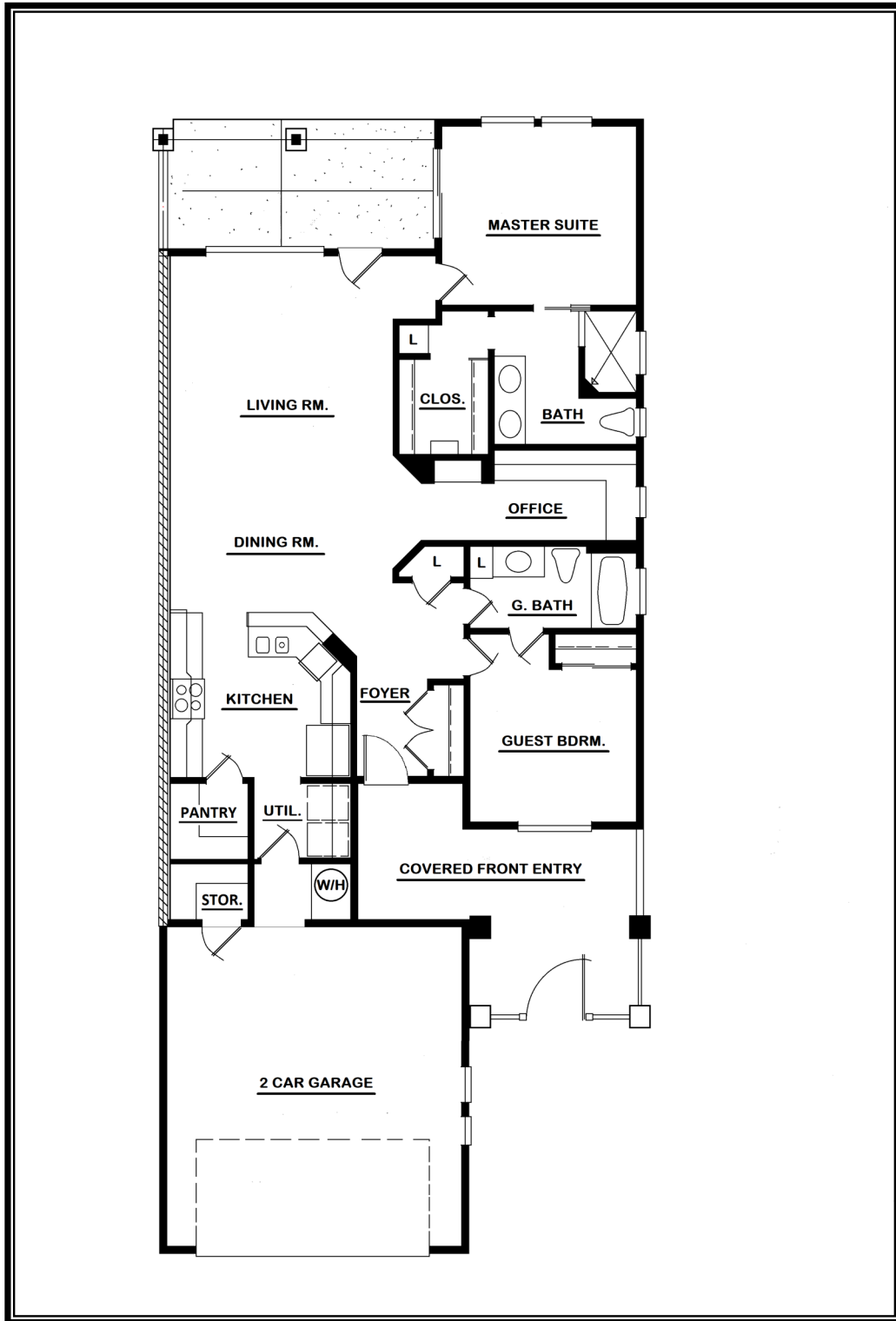
- Block foundation, concrete patio, driveway and sidewalk.  
**Optional pavers or custom concrete available\***
- 2x6 exterior walls with R-19 insulation.
- R-38 insulation in ceilings.
- Masonite Exterior Siding.
- Stone Veneer on front elevations of home.
- Vinyl Dual Pane windows.
- 30 year dimensional shingles.
- Home is all electric.
- Electric Heat Pump central heating.
- Delta faucets & shower fixtures.
- 50 gallon electric water heater.  
**Optional Tankless water heater available\***
- Lighting fixture and ceiling fan allowance.
- Kitchen and Bathroom cabinet allowance.
- Level One Granite Kitchen Countertops.
- Marble Bathroom Countertops.
- Flooring allowances.
- Appliance allowance.
- 2-Car Garage.
- Garage to be insulated with R-19, taped, textured, and painted.
- Builder provides custom closet design.
- We commit to complete your home within 140 days from the time we receive Town of Payson approval, subject to material availability and weather conditions.

**\* Any options listed as available, are at additional cost.**

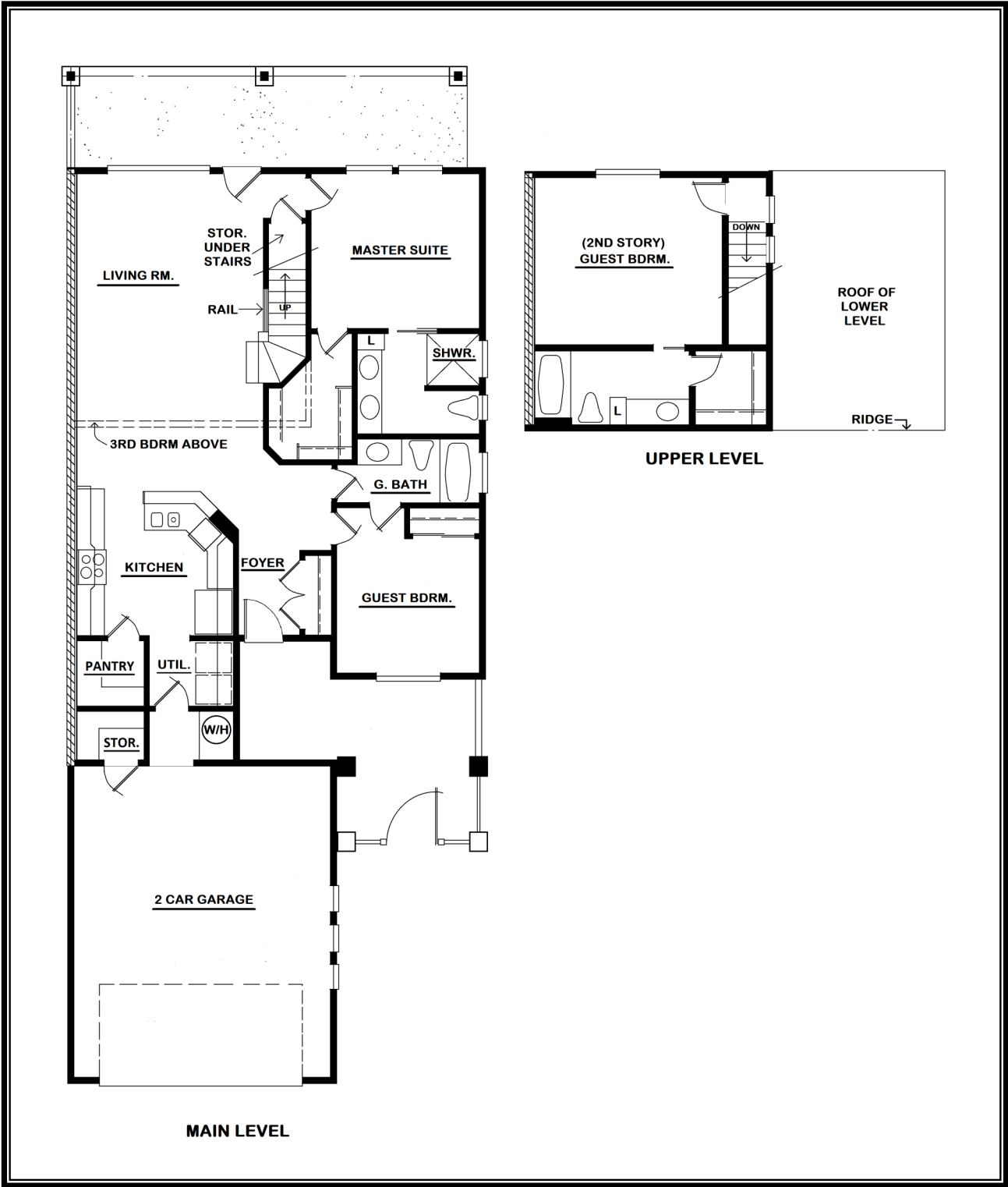
# Aspen - 1250 sq. ft. Livable



# Pinon - 1372 sq. ft. Livable



# Ponderosa - 1620 sq. ft. Livable



# Aspen — Side-By-Side

